

## Scaffolding & Formwork

Sale - Hire - Contract

**CHS** بيت الابتكار للسقالات (ش.ذ.م.م.)  
**CREATIVE HOUSE SCAFFOLDING**  
 (LLC)

## **Company Profile**

### **The Company**

M/s Creative House Scaffolding (L.L.C), Dubai is a Limited Liability Company incorporated under the provisions of Commercial Companies Act 1984 (as amended) in the Emirates of Dubai. The company is operating in the emirate of Dubai by virtue of a commercial license by the department of economic development in Dubai (License No. 542635). The registered office of the company is situated in the emirate of Dubai.

The company is headed by Mr. Nasir Syed, who holds the position of the Managing Director of the firm.

Under the leadership of Mr. Nasir Syed, CHS has managed to grow from single division to multi – faceted organization.

Expansion & Growth plans were made possible through a philosophy and strategy of Customer Service and Compliance.

Dynamic and skillful leadership, efficient management system and high level of transparency has led CHS to grow at a robust pace.

### **About Us**

Established in 2003, Creative House Scaffolding LLC (CHS) has since, gained a reputation for versatility and innovation in the field of scaffolding and formwork.

With services ranging from Sale, Hire and Contracts; we, at CHS have the ability to meet customer challenges with ease. Our confidence lies in the quality and reliability of our services and we believe, in today's market, that's a force to be reckoned with.

Over the years, CHS has developed a team that strikes perfect balance between expertise and experience that enables it to cater across different verticals, from industrial, through construction and to oil & gas.

CHS is an organization instilled with passion and dedication; with each associate of the firm working towards the utmost satisfaction of customer service with high level of efficiency coupled along product quality at par & the toughest international standards has earned CHS a very deserving ISO 9001: 2015 certification.

"An acknowledgement of the passion, dedication and integrity shared by every member at CHS"



## Office & Warehouse

---



**CHS** Control Tower, Motorcity, Dubai - UAE



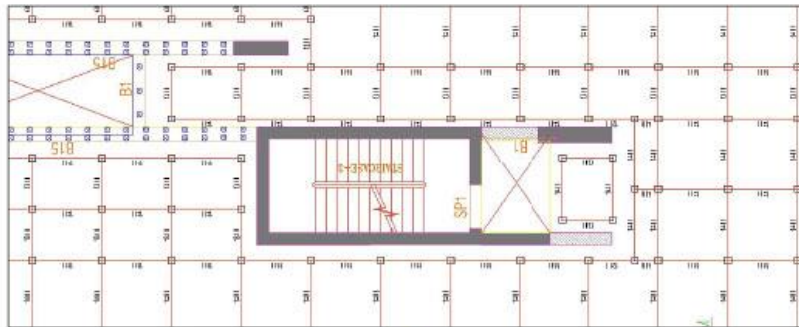
---

**CHS**

Office & Warehouse

## Engineering & Technical

- Consultancy for a detailed planning & assembly advice
- Detailed drawings for all construction stages.
- Finding solution with less cost & high quality.
- Consultancy for the right product choice & applications.
- Full technical advice & support to the clients.



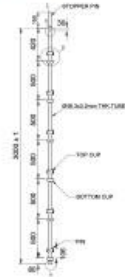


# **CONTENTS**

<b>Page #: 01-04</b>	<b>Creative Lock</b>
<b>Page #: 05-10</b>	<b>Formwork</b>
<b>Page #: 11-13</b>	<b>Mobile Towers</b>
<b>Page #: 14-18</b>	<b>Scaffold Tube &amp; Fittings</b>
<b>Page #: 19-19</b>	<b>Scaffold Boards</b>
<b>Page #: 20-20</b>	<b>Scaffolding Wheels</b>
<b>Page #: 21-21</b>	<b>Ladder Beam &amp; Unit Beam</b>
<b>Page #: 22-23</b>	<b>Ladders</b>
<b>Page #: 24-26</b>	<b>Contract Jobs</b>
<b>Page #: 27-27</b>	<b>NAS Safety Net</b>
<b>Page #: 28-41</b>	<b>CHE Event Scaffold</b>
<b>Page #: 42-45</b>	<b>Office &amp; Yard Location</b>

## Creative Lock System

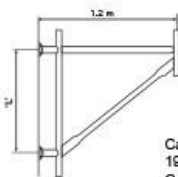
### Standard



Standard are made from 48.3x3.2 mm steel tube, all standards incorporate lower fixed cups and sliding top cups at 500 mm intervals

3.0m standard: 14.8kg  
2.5m standard: 12.4kg  
2.3m standard: 11.4kg  
2.0m standard: 10.0kg  
1.8m standard: 9.0kg  
1.5m standard: 7.9kg  
1.3m standard: 6.5kg  
1.0m standard: 5.0kg

### Cantilever Beam Frame

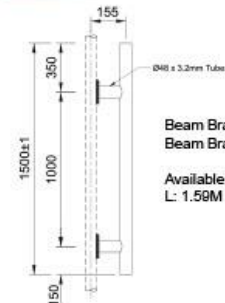


Available Sizes:  
L: 1.5M L: 1.00M

Cantilever Beam Frame 1.50mtr: 19.43kg  
Cantilever Beam Frame 1.00mtr: 16.35kg

Painted

### Beam Bracket



Beam Bracket 1.50mtr: 6.49kg  
Beam Bracket 1.00mtr: 4.72kg

Available Sizes:  
L: 1.50M L: 1.00M

### Universal Jack (with hole)



38mm Hollow universal jack (with hole)

Length: 0.65mtr: 2.65kg  
Length: 0.78mtr: 5.25kg

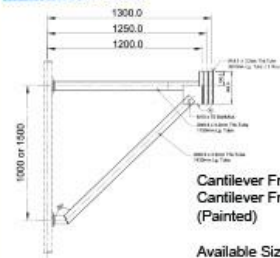
### Ledger



Ledger 3.00mtr: 9.28kg  
Ledger 2.50mtr: 8.23kg  
Ledger 2.00mtr: 6.64kg  
Ledger 1.80mtr: 6.00kg  
Ledger 1.60mtr: 5.36kg  
Ledger 1.50mtr: 5.05kg  
Ledger 1.30mtr: 4.41kg

Ledger 1.20mtr: 4.09kg  
Ledger 1.10mtr: 3.77kg  
Ledger 1.00mtr: 3.46kg  
Ledger 0.90mtr: 3.14kg  
Ledger 0.80mtr: 2.82kg  
Ledger 0.70mtr: 2.50kg  
Ledger 0.60mtr: 2.18kg

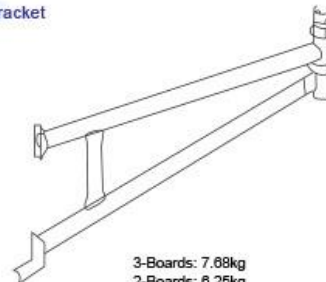
### Cantilever Frame



Cantilever Frame 1.50mtr: 16.99kg  
Cantilever Frame 1.00mtr: 15.69kg (Painted)

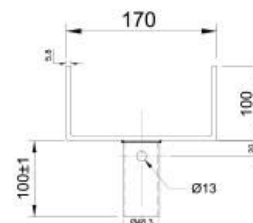
Available Sizes  
L: 1.5M L: 1.00M

### Hop-up Bracket



3-Boards: 7.68kg  
2-Boards: 6.25kg (Painted)

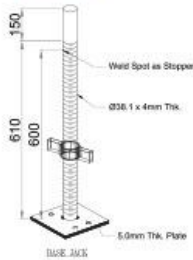
### Fork Head



38 mm Hollow Fork Head 38H/15 Size: 10x7x15 3.39kg  
48.3 mm Hollow Fork Head 48H/12 Size: 10x7x15 3.33kg

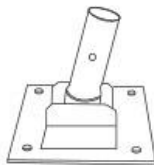
# Creative Lock System

## Base Jack



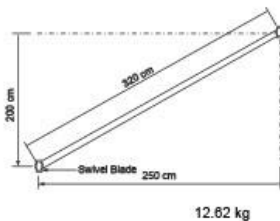
0.38mm Hollow Base Jack	
Length: 0.85mtr Base: 15 x 15	3.68kg
Length: 0.76mtr Base: 15 x 15	4.05kg
Length: 0.86mtr Base: 15 x 15	4.30kg
0.36mm Solid Base Jack	
Length: 0.86mtr Base: 12 x 12	8.01kg
0.32mm Solid Base Jack	
Length: 0.85mtr Base: 12 x 12	5.24kg
Length: 0.85mtr Base: 15 x 15	5.80kg
Length: 0.76mtr Base: 15 x 15	6.30kg
Length: 0.86mtr Base: 15 x 15	6.93kg

## Rocking Base Plate



Height: 20 cm 2.45kg

## Ledger with Swivel Ends

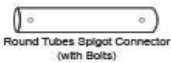


12.62 kg

## Spigot Connector



Round Tubes Spigot Connector  
(with Washer)



Round Tubes Spigot Connector  
(with Bolts)



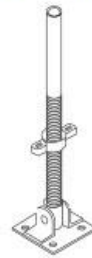
Square Tube Spigot Connector  
(with washer)



Square Tube Spigot Connector  
(with Bolts)

Round Tubes Spigot Connector:	
0.87kg	
(With Washer)	
Round Tubes Spigot Connector:	
0.90kg	
(With Bolts)	
Square Tube Spigot Connector:	
0.70kg	
(With Washer)	
Square Tube Spigot Connector:	
0.68kg	
(With Bolts)	

## Rocking Base Jack



38mm Hollow Rocking Base Jack	
Length: 65 cm Base: 15 x 15	
4.90kg	
36mm Hollow Rocking Base Jack	
Length: 65 cm Base: 15 x 15	
7.91kg	
32mm Hollow Rocking Base Jack	
Length: 68 CM Base: 15 x 15	
6.78kg	

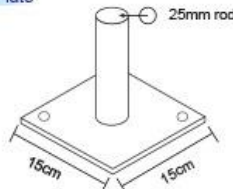
Painted Grey Finish  
D/F Jack Handle  
Plate: 15 x 15 cm  
(With Holes)

## Adjustable U-Head



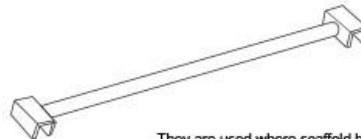
H x W x L  
Length: 76 cm size: 10 x 15x 17  
5.80kg

## Base Plate



Base Plate - 12 x 12cm x 10mm rod	0.77kg
Base Plate - 15 x 15cm x 10mm rod	1.13kg
Base Plate - 15 x 15cm x 25mm rod	1.71kg

## Intermediate Transom



They are used where scaffold boards require intermediate support between the span of two ledgers.

Transom 0.80mtr:	5.42kg
Transom 1.00mtr:	5.78kg
Transom 1.10mtr:	6.13kg
Transom 1.20mtr:	6.49kg
Transom 1.30mtr:	6.84kg
Transom 1.60mtr:	7.91kg
Transom 1.80mtr:	8.62kg
Transom 2.50mtr:	11.11kg

CHS

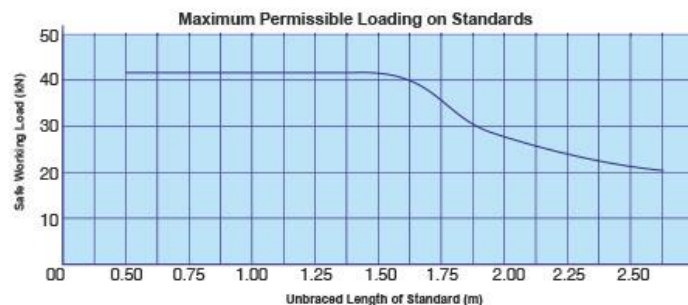
Horizontal Formwork

## Creative Lock Technical Data

### 1. Vertical (Standards)

Standards are manufactured from 48.3 mm O.D. steel tubes with different housing sets (according to the features of each standard joints), at certain intervals. Standards are made available in open ended versions, or with welded spigots. Standard tubes of mild conform to BS 1139, supplied painted or galvanized finish.

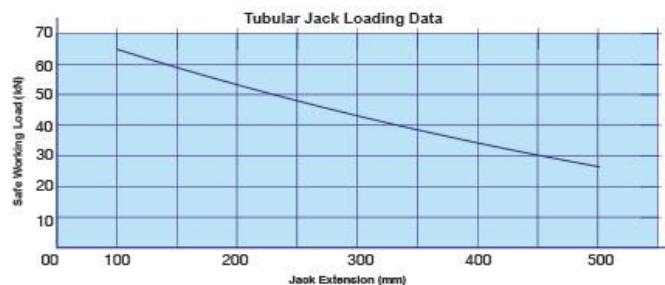
The figure below illustrate the maximum permissible loading on standards. This figure incorporates factors of safety on failure of 2.0



### 2. Base Jack and Universal Jack

The 57 kN capacity galvanized jack has an adjustment range of over 45 cm. It is manufactured from 38mm outside diameter steel tubes with a rolled/cut thread. The jack can be used either at top or the bottom of vertical (standard), so the reasonable portion of the jack will always remain inside the vertical for safety.

The figure below illustrate the safe working load on tubular Jacks. The data incorporates factors of safety on failure of 2.75.

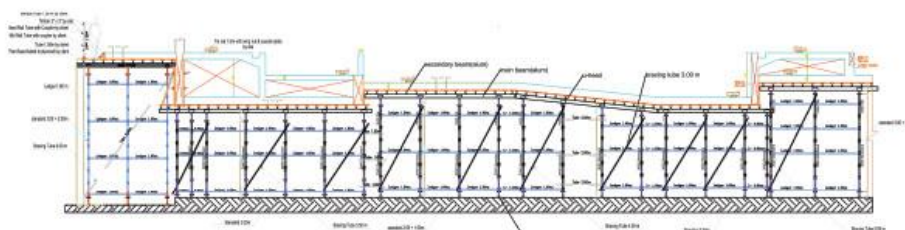
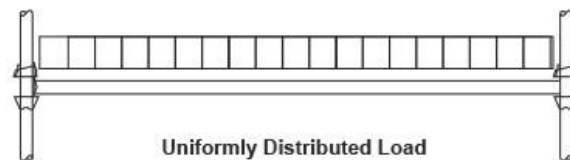




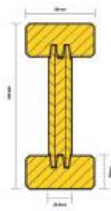
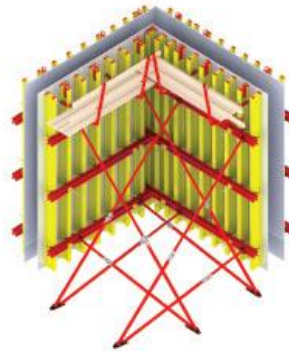
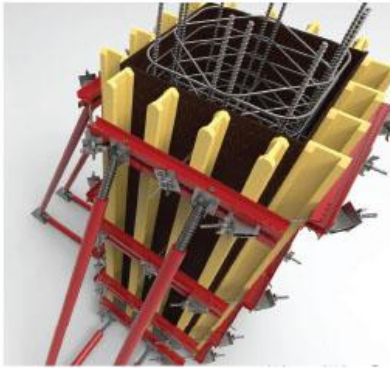
# Creative Lock Technical Data

## 4

Ledger Size (m)	Central Point Load (kn)	U.D.L (Kn/M)	Two Equally spaced point load (kN)
Ledger 2.5	1.71	2.7	1.29(Each)
Ledger 1.8	3.4	-	-
Ledger 1.6	3.52	-	-
Ledger 1.2	3.7	-	-
Ledger 0.9	4.8	-	-



# Creative Vertical Formwork



H20 Beams

## Technical Specification

- 1 - Permissible modulus (M) = 0.5 t
- 2 - Permissible shear force (Q) = 1.10 t
- 3 - Section modulus (Z) = 461 cm
- 4 - Geometrical moment on inertia (I) = 4613 cm

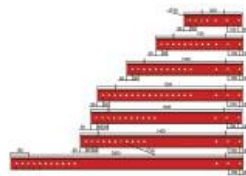


Aluminum Beam

## TECHNICAL SPECIFICATIONS

1. Permissible bending moment (M) = 0.77 (t.m)
2. Permissible shear force (t) = 4.00 t
3. Section modulus (z) = 51.70 cm<sup>3</sup>
4. Geometrical moment on inertia (I) = 389.70 cm<sup>4</sup>

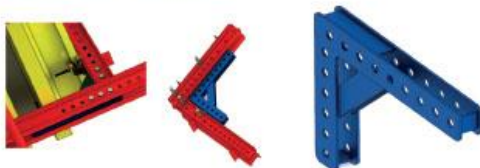
Steel Waler



Push Pull



Top-50 Corner Connection



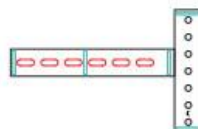
Steel Waler Splice



Lifting Eye



T-Splice



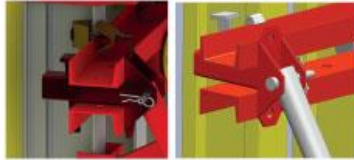
Access Bracket



CHS

# Creative Vertical Formwork

Head Plate



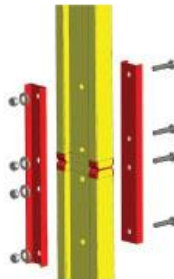
Double Base Plate



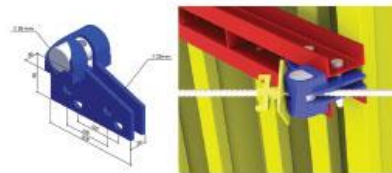
H20 Extension Splice

H20 extension splice is used for extending panel, it forms connection between individual beams and produces tension and compression resistant, rigid, aligned and offset force joint between beams and panels.

The existing holes at the end of the beam can be used for bolt connection.



Universal Angle Tie



For clamping the corner panels together.

Using with tie rod for fixing outside corners with needed angle.

The angle range between tie rod and Steel Waler from 23 ° to 64 °.

H20 Beam Clamps

Use reliably to connect the H20 beam to the Steel Waler at any required level, of Steel Waler, to ensure that the angle between H20 Beams and Steel Waler is 90°.

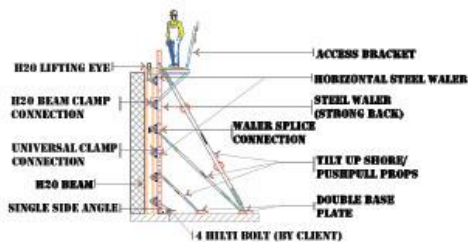
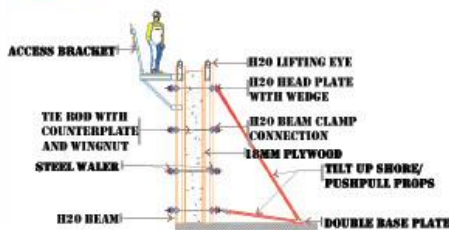
FLANGE CLAMP



Universal Clamp



Drawings



# Creative Formwork Accessories

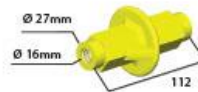
## Plastic Cone (Tie Cone)



The expandable PVC tube allows the tie bars to be removed after concrete has been placed.

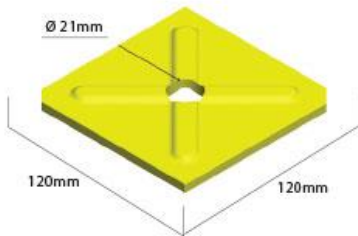
The Cone gives a cover of 10 mm to the PVC tubular sleeve / spacer.

## Water Stopper



This metal piece is placed in the center of the wall and connected on both sides of the Tie Rods. Its function is to provide a barrier to prevent the penetration of liquids to the inside of the wall.

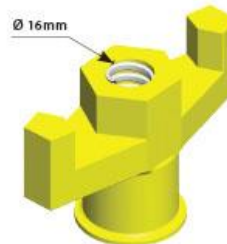
## Counter Plate (Anchor Plate/Tie Plate)



Used with wing nut and tie rod to clamp wall or column shutters together.

Used with wing nut and universal angle tie for fixation of four sides of panels of column.

## Wing Nut M16mm



Used with counter plate and tie rod to clamp wall or column shutters together.

Used with counter plate and universal angle tie for fixation of four sides of the panels of column with right angle 90°.

## M-Tie Rods



Used to fix complementary formwork during the pouring operation.

Produced in standard length of 6 meters and cut to necessary length on the construction site. Safe working load 85 KN.

Diameter 16 mm. L: length of Tie Rod

We can supply any other length, not maintained in the table, but less than 6m.

## Plastic Sleeve



The expandable PVC tube allows the tie bars to be removed after concrete has been replaced.



## CHS EURO PROPS - HORIZONTAL FORMWORK

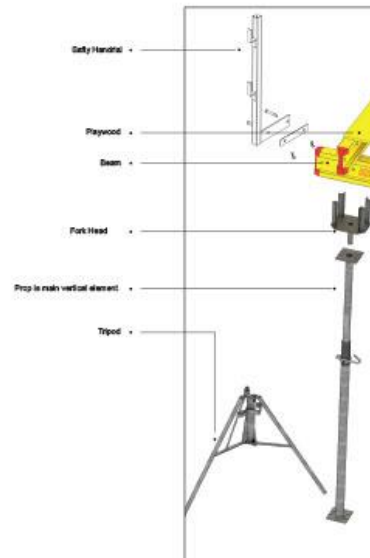
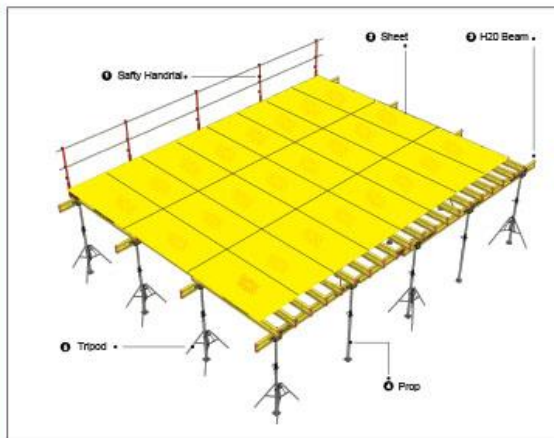
### Description

- Internal tube with diameter 63.00 mm with thickness=4mm steel grade 37.
- Prop locking nut to fixing and fine adjustment of internal tube.
- Prop locking pin supporting external with internal tube and rested on prop nut.

Type 1 (30KN)		Type 2 (20KN)	
Description	Size	Description	Size
CEP 350	3.50	CEP 400	4.0
		CEP 550	5.50

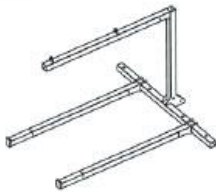


### Standard Components



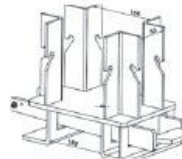
# Creative Tableform

C-Fork



Description	Weight Kg
Lifting element	770

Table head



Description	Weight Kg
Table head	15.50

Table Trolley



Description	Weight Kg
Table Trolley	524

Handrail Safety Post



CHS

Creative Tableform

# CHS H20 Beam

## Your advantages:

- durable due to an one-piece PU-bonded end of the beam
- PU-bonded beam end protects against moisture penetration and does not splinter
- made in Austria - exclusively available from specialised traders
- all beam flanges are proof-loaded



Form-on smartBEAMplus 20P	PU	kg	Art. no.
Form-on smartBEAMplus 20P 180	100	9.4	620142000
Form-on smartBEAMplus 20P 245	100	12.7	620143000
Form-on smartBEAMplus 20P 265	100	13.8	620144000
Form-on smartBEAMplus 20P 290	100	15.1	620145000
Form-on smartBEAMplus 20P 330	100	17.2	620146000
Form-on smartBEAMplus 20P 360	100	18.7	620147000
Form-on smartBEAMplus 20P 390	100	20.3	620148000
Form-on smartBEAMplus 20P 450	100	23.4	620149000
Form-on smartBEAMplus 20P 490	100	25.5	620150000
Form-on smartBEAMplus 20P 590	60	30.7	620151000

## Technical specifications:

Web: height = 20 cm

Flange: height = 4.0 cm, width = 8.0 cm

Moment (M): 5 kNm

Shear force (Q): 11 kN

Regidity (E x J): 450 kNm²

Certification: EN 13377

## Example:

- Floor thickness: 20 cm | • Secondary beam spacing: 0.75 m |
- equals primary beam spacing as per Table 1: 2.61 m |
- select primary beam spacing ≤ 2.61 in Table 2 (= 2.50 m) |
- permissible prop spacing at 20 cm floor thickness in Table 2: 1.19 m

		Table 1					Table 2									
Floor thickness (cm)	Floor load * (kN/m²)	Max. perm. primary beam spacing (m) for secondary beam spacing (m) of					Max. perm. prop spacing (m) for selected secondary beam spacing (m) of									
		0.500	0.625	0.667	0.750	1.00	1.25	1.50	1.75	2.00	2.25	2.50	2.75	3.00	3.50	
10	4.3	3.69	3.43	3.35	3.22	2.93	2.72	2.50	2.32	2.17	2.04	1.88	1.71	1.57	1.34	
12	4.7	3.49	3.24	3.17	3.05	2.77	2.57	2.37	2.20	2.05	1.87	1.69	1.53	1.41	—	
14	5.2	3.33	3.08	3.03	2.91	2.65	2.46	2.26	2.09	1.91	1.70	1.53	1.39	1.27	—	
16	5.7	3.20	2.97	2.91	2.79	2.54	2.36	2.16	2.00	1.75	1.55	1.40	1.27	1.16	—	
18	6.2	3.08	2.86	2.80	2.69	2.45	2.27	2.07	1.84	1.61	1.43	1.29	1.17	—	—	
20	6.7	2.98	2.77	2.71	2.61	2.37	2.18	1.99	1.70	1.49	1.33	1.19	1.08	—	—	
22	7.2	2.90	2.69	2.63	2.53	2.30	2.11	1.85	1.59	1.39	1.24	1.11	1.01	—	—	
24	7.7	2.82	2.61	2.56	2.46	2.24	2.04	1.73	1.49	1.30	1.16	1.04	0.95	—	—	
26	8.2	2.75	2.55	2.49	2.40	2.18	1.96	1.63	1.40	1.22	1.09	0.98	—	—	—	
28	8.7	2.68	2.49	2.44	2.34	2.13	1.85	1.54	1.32	1.15	1.03	0.92	—	—	—	
30	9.2	2.62	2.44	2.38	2.29	2.08	1.75	1.46	1.25	1.09	0.97	0.87	—	—	—	
35	10.5	2.50	2.32	2.27	2.18	1.91	1.52	1.27	1.08	0.95	0.85	—	—	—	—	

\* Based on EN 12612, numbers refer to solid concrete floor slabs with live loads of 0.75 kN/m² and min. variable loads of 10%, min. 0.75 kN/m² but not to exceed 1.75 kN/m² (with 2.5 kN/m² fresh concrete slab bulk density). The mid-span deflection has been limited to 1/500. Significantly lower floor loads are produced in hollow floor slabs.



## CAT - CLASS 3 LIGHT WEIGHT ALUMINUM MOBILE TOWER



- LADDER FRAMES
- COLOUR CODED BRACES
- TOE BOARD SET
- CLASS 3 LOADING
- EASY ERECTION
- PLATFORM FITTED WITH WINDLOCK

### SIZES AVAILABLE

- A. 1.45 Mtr x 2.5 Mtr
- B. 1.45 Mtr x 1.8 Mtr
- C. 0.80 Mtr x 1.8 Mtr

### Safe Working Loads

#### Individual Platforms

The maximum safe working loads per individual platform are 294 kg. Uniformly distributed.

#### Working Levels

The maximum safe working loads per working level are 588 kg. On Double Width Towers 294 kg. On Single Width, a working level is created by use of 2 platforms DW. 1 Platform SW. The maximum number of working level per tower is 2.

#### Complete Tower Structure

The maximum safe working load of the Tower structure including self weight and ballast is 1000 kgs.

Kitemark License No. KM 25447

Pasma Member

BSEN ISO9001: 1994

Certificate No. GS 24730

Tower Ref.	DW-1.80V/2.5V-11.30		DW-1.80V/2.5V-11.80		DW-1.80V/2.5V-12.30	
Working Height	13.3m		13.8m		14.3m	
Tower Height	12.3m		12.8m		13.3m	
Platform Height	11.3m		11.8m		12.3m	
Width	1.45m		1.45m		1.45m	
Length	1.8m	2.5m	1.8m	2.5m	1.8m	2.5m
Weight (kg)	204kg	314kg	300kg	321kg	308kg	329kg

Double Width Tower 1.45 m x 2.5 m x Height (with Built in Ladder)														
Sl.No.	Item Description	Tower Height 3.2	Tower Height 4.2	Tower Height 5.2	Tower Height 6.2	Tower Height 7.2	Tower Height 8.2	Tower Height 9.2	Tower Height 10.2	Tower Height 11.2	Tower Height 12.2	Tower Height 13.2	Tower Height 14.2	Tower Height 15.2
1	Adj. Leg + Wheel 200mm	4	4	4	4	4	4	4	4	4	4	4	4	4
2	4R Ladder Frame 1.45M x 2.0M	1	2	2	3	3	4	4	5	5	6	6	7	8
3	4R Frame 1.45M x 2.0M	1	2	2	3	3	4	4	5	5	6	6	7	8
4	3R Ladder Frame 1.45M x 1.5M													
5	3R Frame 1.45M x 1.5M													
6	2 R Frame/Guardrail 1.0M	1		1		1		1		1		1		1
7	2 R Ladder Frame 1.0M	1		1		1		1		1		1		1
8	Plain Platform 2.5M	1	1	1	1	1	1	1	1	1	1	1	1	1
9	Trampoline Platform 2.5M	1	1	1	1	1	1	1	1	1	1	1	1	1
10	Horizontal Brace 2.5M	6	6	6	6	6	6	6	6	6	6	6	6	6
11	Diagonal Brace 2.7M	3	5	7	9	11	13	15	17	19	21	23	25	27
12	Stabilizer 7 (Small)			4	4	4	4							
13	Stabilizer 10 (Medium)						4	4	4	4				
14	Stabilizer 15 (Large)										4	4	4	4
15	Toe Board Set 1.45M x 2.5M	1	1	1	1	1	1	1	1	1	1	1	1	1

CHS

Aluminum Mobile Tower



## Creative Power Towers

Power Tower Duo



Working Dimensions  
Maximum Working Height : 5.10 m  
Maximum Platform Height : 3.10 m  
Basket Dimensions : 1.52 X 0.75 m  
Working footprints : 1.79 X 1.22m  
Safe working Load : 250kg  
Maximum Manual force : 400N (2 persons)

Eco Lift



Working Dimensions  
Maximum Working Height : 4.20m  
Maximum Platform Height : 2.20m  
Basket Dimensions : 800 mm(L) X 600 mm(W)  
Working footprints : 1.3m X 0.7m  
Safe working Load : 150kg  
Maximum Manual force : 200N

Nano Push



Working Dimensions  
Maximum Working Height : 4.50m  
Maximum Platform Height : 2.50m  
Basket Dimensions : 1m X 0.73m  
Working footprints : 1.19m X 0.75m  
Safe working Load : 200kg  
Maximum Manual force : 200N

Peco Lift



Working Dimensions  
Maximum Working Height : 3.50m  
Maximum Platform Height : 1.50m  
Basket Dimensions : 720 mm(L) X 600 mm(W)  
Working footprints : 985 mm X 700 mm  
Safe working Load : 150kg  
Maximum Manual force : 200N

# Heavy Duty Mobile Tower



## Scaffold Pipes

Scaffold Pipe available in Galvanized/Black Version

Technical Data for Scaffold Pipe  
As per specification BS EN 39:2001

Outside Diameter		Thickness		Weight per unit length	
Inches	mm	Inches	mm	lbs/foot	kg/m
1.1/2	48.3	0.126	3.2	2.392	3.56
1.1/2	48.3	0.157	4.0	2.937	4.37

### CHEMICAL COMPOSITION

%C Max	%Si Max	%Mn Max	%P Max	%S Max	%Al Max
0.2	0.05	1.4	0.04	0.045	0.02

### Mechanical Properties

Yield Strength	: 235 MPa (Min)
Tenile Strength	: 340-520 Mpa
Elongation	: 24% (Min) on Gauge Length
	: 5.65 x Sq. Root of Cross Sectional Area
End Finish	: Plain End
Straightness	: 1mm IN 500mm length
Zinc Coating	: 40 Microns Minimum Outside
Marketing	: EN 39 – Date – Thickness at every 1 meter Length (upon request)
Delivery Condition	: As rolled condition (without protection)
	Hot dipped Galvanized



## Scaffold Fittings

Double Coupler



Drop Forged Swivel Coupler (Size 48.3mm)



EN-74  
Used for the connection of two tubes at any-angles.

Drop Forged Putlog Coupler (Size 48.3mm)



Used for the connection of putlog and transom to ledgers.

Board Retaining Coupler (Size 48.3mm)



EN-74  
Boards are quickly locked in the correct position, providing high resistance to both lateral and upward movement.

Girder Coupler Fixed (Size 48.3)



En-74  
Provides a fixed 90° coupling of a scaffold girder.  
Must be used in pairs.

Sleeve Coupler (Size 48.3mm)



EN-74  
Used as the external connection of two tubes end-to-end provides a more secure joint than the Joint Pin.

Girder Coupler Swivel (48.3mm)



EN-74  
Provides a rotating coupling of a scaffold tube to an 'I' beam girder.  
Must be used in pairs.

Inner Joint Pin (Size: 48.3mm)



For vertical and Handrail application.

Supa Tie Coupler Right



Supa Tie Coupler Left



Ladder Clamp (Size: 48.3mm)



Toe Board Clamp (Size: 48.3mm)





## Scaffold Fittings

Fencing Coupler (Size: 48.3mm)



Band & Plate



Prop Double Coupler



Prop Swivel Coupler



Fixed Finial



Swivel Finial



T-Bolt



Unifix



Steel Pallet



Pallet Cup





## Scaffold Tools/Ancillary

### Scaffold Tag & Holder

To indicate the safety level for scaffolding during erection, after completion and also during dismantling.



### Measurement Tape

(5m) Long



### Leather Belt

- Comes complete with
- Spanner holder
- Ratchet holder
- Spirit Level holder
- Measuring Tape holder



### Scaffold Safety Harness/Energy Absorber

A shock absorber is to be used with our harnesses (on the door sell fastening/D-Ring only). In case of a fall, it will absorb one part of the shock (which would not be the case with a rope).  
The shock resistance in case of a fall for the system will be less than 600 kg (as per the requirement of EN 355)  
CE Approved and confirmed European norm EN 361



### Podger Hammer & Safety Lanyard



### Fallarrest



# Scaffold Tools/Ancillary

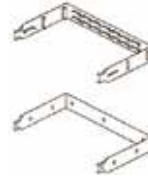
## Tube End Cap

To protect the users from injuries against scaffold protruding pipe-ends. Simple to fix & compliance to safety requirement. High visible color and it fits any type of scaffold tubes of 48.3 mm diameter.



## Board End Bands

Size  
550mm x 25mm x 0.5mm  
Made of mild steel and comply to BS 729 Standards.



## Gin Wheel Pulley

Used to assist the loading of supplies and equipment onto scaffolding.



## Ratchet Spanner

Scaffold RATCHET 17/21 is made especially for use on BS/EN scaffold couplers. It is made from high quality Chrome Vanadium steel and heat treated for durable & longer life span.



## Spirit Level

Scaffold bridge level (Magnetic) made of aluminum especially designed to be used with all types of scaffold for easy and accurate level reading.



## Scaffold Box Spanner

Scaffold spanner 7/16", is made especially for use on BS/EN scaffold couplers. It is made from high quality Chrome Vanadium steel and heat treated for double and longer life span.



## T-Bolt with nut and Washer (Zinc Plated)

Drop forged coupler accessory



## Scaffold Clamp Lifting Bag

Coupler lifting bag available in 50 kg & 30kg.  
Also available in leather & canvas.



Leather Bag



Canvas Bag

# Scaffold Wooden & Steel Boards

## BS2482 Scaffold Wooden Board

Our Scaffold is fully comply with the standard issued by the British Standard institute and are monitored for quality under the ISO 9001 accreditation. All BS2482: 1981 scaffold boards are marketed with the following information, which is embossed on the end band.

The word "support every 1.5m or 1.2m max" it is used as a temporary access platform. Standard Size: 38mm x 225mm x 3.9m long. Shorter lengths also available depend on the quantity.



## Scaffold Laminated Boards

Laminated Board is manufactured from LVL (Laminated Veneer Lumber). The structural uniformity of LVL makes it the perfect solution for a safe, lightweight scaffold board. Each Board is made from many layers of thin veneer, which increases the reliability and strength of the product.

Size: 38mm x 225mm x Length

Unit Weight: 4.9kg/m

Every board is individually proof tested to verify that it conforms to OSHA deflection limits before being branded as a scaffold board. Shorter lengths also available depend on the quantity.

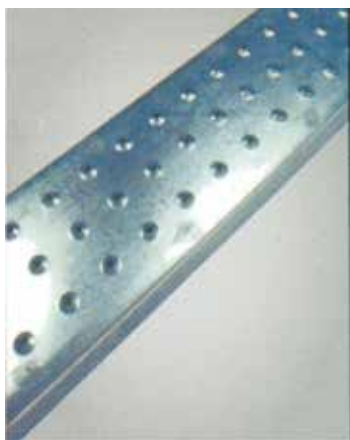


## Scaffold Metal Board

BS EN 12811-1

Scaffold metal deck is now used as a replacement of timber boards as a temporary access platform it boasts high load carrying capacity and triples the life span of a timber board for a competitive price.

It is available in painted and galvanized version and a 4M boards weight 18 kgs for a 38mm height boards. It comes in various sizes from 1m to 4m length. All steel boards comply to BS EN 12811-1 and gone through stringent technical test as well many international third part recognition. It is recommended to use BRC to secure the steel board. Customer name can be embossed at both caps, depending on the quantity.



# Scaffold Castors

Scaffold Castors S.W.L. Upto 820 Kgs.

RDS/Scaff series are with wheel lock and swivel seal and are provided with either socket or spring/loaded solid plugs. Load capacity in addition to the Dynamic loads SAFE working SWL static loads are also shown in the table.

Rexello



Revvo / UK



## DATA FOR SCAFFOLDING TYPE TOP FIXTURE

Wheel Dia.	Tread Width.	Overall Height.	Offset	Wheel Type	SOCKET FITTING		SPRING LOADED SOLID PLUG FITTING	
					Dynamic Capacity	Static Capacity S.W.L.	Catalog Reference	Static Capacity S.W.L.
A	B	C	D		In Kgs.	In Kgs.		In Kgs.
150 (6")	44.5 (1 ¾ ") 50 (2")	197 (7 ¾ ")	44.5 (1 ¾ ")	Rubber Tyred (RT)	370	820	RD5 / SCF 2 / RT / 150	820
				Cast Iron (C)	410		RD5 / SCF 2 / C / 150	
				Nylon (N)	410		RD5 / SCF 2 / N / 150	
				Phenorex (P)	410		RD5 / SCF 2 / P / 150	
200 (8")	50 (2")	243 (9 ⅝ ")	44.5 (1 ¾ ")	Rubber Tyred (RT)	500	820	RD5 / SCF 2 / RT / 200	820
				Cast Iron (C)			RD5 / SCF 2 / C / 200	
				Nylon (N)			RD5 / SCF 2 / N / 200	
				Phenorex (P)			RD5 / SCF 2 / P / 200	

Roller and Ball Bearing also available at an extra cost. • Finish-Bright zinc Galvanized.

Note: Tolerance on the wheel diameter 'D' upto & including 100 mm shall be  $\pm 2$ mm and for the diameters greater than 100 mm shall be  $\pm 2$  percent (%)

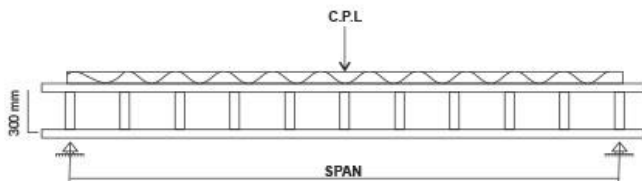


# Ladder Beam & Unit Beam

## Ladder Beams

Ladder Beam are made of standard 48.3 Tube CHS ladder beam are made to high standards BS1139 / EN 39 which Notched ends to the rungs to maintain maximum strength at the joints.

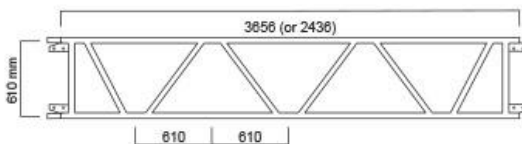
Description	Weight 4mm	Weight 3.2mm
3 mtr Ladder Beam	40	32
4 mtr Ladder Beam	53	43
5mtr Ladder Beam	66	54
6 mtr Ladder Beam	81	65
7 mtr Ladder Beam	93.4	75



## Unit Beam Steel

Can be used either to provide a clean span between scaffold or may be assembled as prefabricated framework for temporary building or other structure. Complete spans can be quickly erected utilizing individuals beam lengths. Beam ends are self locating to provide fast on side assembly and are secured using Mx20x50 bolt, complete with nut and washer.

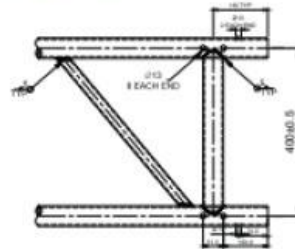
Top and bottom chords manufactured from 48.30/D x 4mm thick steel tube to BS 1139, cut to length 2.44m or 3.6m at 610mm centre vertically. Heavy duty spigot welded in one end to chords. End post is 48.3mmO/Dx3.2mm thick to BS 4360



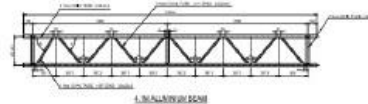
Type (Length ft)	(Length M)	Plate type	Plate hole Dimension (mm)	Weight
12'	3.66	2 holes	022x51c/c x	38.6
8'	2.44	2 holes	483 vertical centers	52.4

Diagonal brace tubes are 27mm O/D x 3.2mm thick steel tube grade 13C BS 4380. Coupler Plate with 2 or 3 holes are welded on top and bottom at bottom ends. Supplied complete with bolts and nuts. Finishing: Painted or Galvanized.

## Unit Beam Aluminium



TYP END DETAIL



Available Sizes: 4.1mtr  
6.1mtr  
8.1mtr

CHS

Ladder Beam & Unit Beam

## Ladders

### Timber Pole Ladders

- \* Finest Quality, Heavy duty ladders
- \* Matched scandinavian Whitewood stiles
- \* Finished with 2 coats of ladder preservative
- \* Hardwood rungs at 250mm centers
- \* Tie rods under every rung
- \* Class 1 Heavy Duty Rating
- \* Manufactured on site to highest specification in accordance with BS1129

LENGTH		RUNGS (KGS)	WEIGHT
3.0m	(9'10")	11	14.50
4.0m	(13'1")	15	16.50
5.0m	(16'5")	19	20.00
6.0m	(19'8")	23	22.50
7.0m	(23'0")	27	27.00
8.0m	(26'3")	31	38.00
9.0m	(29'6")	35	41.00
10.0m	(32'10")	39	46.00



### Steel Ladder

MS Steel Ladder  
50x25x2mm thick  
Silver painted finish with Rubber Bush

Length	Rungs	Kgs
3.0 (9'10")	11	10
4.0 (13'1")	15	14
5.0 (16'5")	19	18
6.0 (19'8")	23	22
7.0 (23'0")	27	26



### Steel Swing Gate



### Scaffold Steel Hatch Trapdoor



# Ladders

## Aluminium Ladders

### Double Sided Ladder



MODEL	STEPS	'A' TYPE HEIGHT		WEIGHT	
		mm	ft	kg	lbs
DS04	4	985	3.23	3.00	6.61
DS05	5	1235	4.05	3.80	8.38
DS06	6	1485	4.87	4.50	9.92
DS07	7	1734	5.69	5.50	12.13
DS08	8	1990	6.53	6.00	13.23
DS09	9	2225	7.30	7.50	16.53
DS10	10	2475	8.12	7.90	17.42
DS11	11	2725	8.94	8.80	19.40
DS12	12	2975	9.76	10.60	23.37
DS14	14	3475	11.40	11.50	25.35
DS16	16	3975	13.04	15.30	33.73

### Square Rung Double Extension Ladder

MODEL	RUNGS	EXTENDED LENGTH		FOLDED LENGTH		WEIGHT	
		mm	ft	mm	ft	kg	lbs
ED08SQ	16	3760	12.34	2360	7.74	11.03	24.32
ED10SQ	20	4880	16.01	2920	9.58	13.48	29.72
ED12SQ	24	6000	19.69	3480	11.42	15.92	35.10
ED14SQ	28	6840	22.44	4040	13.26	18.37	40.50
ED16SQ	32	7960	26.12	4600	15.10	20.81	45.88
ED18SQ	36	8800	28.87	5160	16.94	23.20	51.28
ED20SQ	40	9920	32.55	5720	18.78	25.70	56.66



Square Rung with extra stepping surface for comfortable and secure footing.



### Square Rung Single Pole Ladder

MODEL	RUNG	LENGTH		WEIGHT	
		mm	ft	kg	lbs
ES08SQ	8	2360	7.74	5.151	11.36
ES10SQ	10	2920	9.58	6.347	13.99
ES12SQ	12	3480	11.42	7.524	16.62
ES14SQ	14	4040	13.26	8.738	19.25
ES16SQ	16	4600	15.1	9.933	21.88
ES18SQ	18	5160	16.94	11.129	24.51
ES20SQ	20	5720	18.78	12.324	27.14



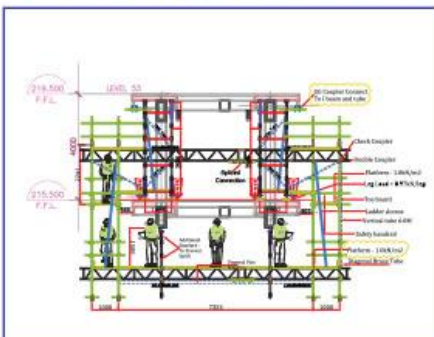
## Scaffold Sub Contract Jobs

CHS is renowned for maintaining its international standard in the scaffolding industry. It caters to clients of the civil construction, Industrial sites in the UAE. CHS undertake complete range of contract jobs. CHS has expertise in some of the typical scaffolding application, Such as Industrial Scaffold, OHTML Works, Stage & Events, Access Scaffolds, and Bird Cage Scaffolds for interior work application Outdoor Advertising Scaffold, Ship repairs, Slab& Column formwork. Render CHS has been registered a steady growth due to the dynamic management led by its highly experienced & qualified professionals.

CHS, our world is scaffolding, it's our commitment to design, supply and deliver the highest quality scaffoldings to our customers on competitively and ontime. It had earned a very deserving ISO 9001:2015 Certificate.





[illegible][illegible]

Kursübersicht		Kursübersicht		Kursübersicht		Kursübersicht		Kursübersicht	
Kurs	Preis	Kurs	Preis	Kurs	Preis	Kurs	Preis	Kurs	Preis
1. Kasse	1,00	2. Kasse	1,00	3. Kasse	1,00	4. Kasse	1,00	5. Kasse	1,00
6. Kasse	1,00	7. Kasse	1,00	8. Kasse	1,00	9. Kasse	1,00	10. Kasse	1,00
11. Kasse	1,00	12. Kasse	1,00	13. Kasse	1,00	14. Kasse	1,00	15. Kasse	1,00
16. Kasse	1,00	17. Kasse	1,00	18. Kasse	1,00	19. Kasse	1,00	20. Kasse	1,00
21. Kasse	1,00	22. Kasse	1,00	23. Kasse	1,00	24. Kasse	1,00	25. Kasse	1,00
26. Kasse	1,00	27. Kasse	1,00	28. Kasse	1,00	29. Kasse	1,00	30. Kasse	1,00
31. Kasse	1,00	32. Kasse	1,00	33. Kasse	1,00	34. Kasse	1,00	35. Kasse	1,00
36. Kasse	1,00	37. Kasse	1,00	38. Kasse	1,00	39. Kasse	1,00	40. Kasse	1,00
41. Kasse	1,00	42. Kasse	1,00	43. Kasse	1,00	44. Kasse	1,00	45. Kasse	1,00
46. Kasse	1,00	47. Kasse	1,00	48. Kasse	1,00	49. Kasse	1,00	50. Kasse	1,00
51. Kasse	1,00	52. Kasse	1,00	53. Kasse	1,00	54. Kasse	1,00	55. Kasse	1,00
56. Kasse	1,00	57. Kasse	1,00	58. Kasse	1,00	59. Kasse	1,00	60. Kasse	1,00
61. Kasse	1,00	62. Kasse	1,00	63. Kasse	1,00	64. Kasse	1,00	65. Kasse	1,00
66. Kasse	1,00	67. Kasse	1,00	68. Kasse	1,00	69. Kasse	1,00	70. Kasse	1,00
71. Kasse	1,00	72. Kasse	1,00	73. Kasse	1,00	74. Kasse	1,00	75. Kasse	1,00
76. Kasse	1,00	77. Kasse	1,00	78. Kasse	1,00	79. Kasse	1,00	80. Kasse	1,00
81. Kasse	1,00	82. Kasse	1,00	83. Kasse	1,00	84. Kasse	1,00	85. Kasse	1,00
86. Kasse	1,00	87. Kasse	1,00	88. Kasse	1,00	89. Kasse	1,00	90. Kasse	1,00
91. Kasse	1,00	92. Kasse	1,00	93. Kasse	1,00	94. Kasse	1,00	95. Kasse	1,00
96. Kasse	1,00	97. Kasse	1,00	98. Kasse	1,00	99. Kasse	1,00	100. Kasse	1,00



# NAS Safety Net & Baricade

Safety Fan System:



## SAFETY FAN FALL PROTECTION SYSTEM.

The Safety Net Fan Maxi has been developed to extend the catching width of the standard fan, and to increase the level of containment provided.

The Safety Net Fan utilises the Class B1 net and comes with 60 x 60mm mesh and 20mm x 20mm debris net as standard, which has been proven to arrest falls of up to 100kg from a height of 6m, conforming to EN1263-1&2 (Safety Nets).

The elasticity of the net, together with a slight deformation of the frame, ensures that the impact of a fall is absorbed, considerably decreasing the risk of injury or objects falling to street level. Items do not bounce out or shatter which can harm people and property below. B1 nets that comply with EN1263-1&2 are significantly stronger than conventional methods of protection, as well as being energy absorbent, absorbing up to 4.4 kJ.

The combined layer net is able to catch considerably smaller particles of debris, therefore, protecting property and people at ground level. Fans can be folded in to retrieve fallen objects.

Designed to catch materials and people

- 60 x 60mm mesh density
- 20mm x 20mm mesh & Comes with a debris net as standard
- 6.3meter long by 3.1meter wide
- Folds up against the facade for easy crane access below or as a safety precaution during bad weather



## SAFETY NETTING / ROOFTOP NETTING / VERTICLE NETTING

Falls from height are the main hazard associated with the industry today. Operatives are exposed to leading edges, fragile roof sheets, skylights and partly fixed sheets from which they can fall.

Safety netting provides additional safety when working at heights and is the preferred solution by the HSE over the use of safety harnesses and lines.

Safety netting is rigged below the steelwork and offers workers increased freedom of movement whilst offering total protection within the netted area. It also provides freedom for other trades working below.

Safety Netting can be erected to Pre Cast / Metal Decking using specially designed clamps, thus allowing the beams to sit directly onto the steelwork and not trapping any tie cords. The safety netting is rigged close to the underside of the roof attached to the structural steelwork.

### Benefits of safety netting

- Provides unhindered movement for workers
- Better safety than a traditional harness and line systems
- Safety nets, with debris overlay attached, also protect workers below from debris and falling materials
- Safety netting can be fixed in almost all roofing and flooring situations
- Our safety netting is installed by trained Safety Net Riggers
- All nets are manufactured with EN 1263-1 and are safety checked before every project and also annually



## NAS EDGE PROTECTION SYSTEM

Our NAS edge protection system offers the highest standard of edge protection to reduce the risk of falls from height. Based on a circular tube and designed to the latest standards, NAS edge protection adds a new dimension of safety.

THE RIGHT SOLUTION FOR SAFETY ON YOUR SITE  
NAS edge protection is a multi-purpose system with a number of options. For maximum versatility, the system is designed for use with:

- |            |        |
|------------|--------|
| Concrete   | frames |
| Steel      | frames |
| Formwork   | beams  |
| Upsland    | beams  |
| Staircases |        |



# CHE Creative House Event Division

CHE have the resource to take your conceptual designs from paper to reality, managing all aspects of the process in-house design, engineering to building custom-made as well as standardized concert stages and temporary structures for all kind of events. Services has a well-earned reputation for creativity, commitment and client satisfaction.

Creative House Events deliver the complete package, from brief to activation, saving time and money for our clients. Combining components of the scaffold and staging divisions with custom elements and extensive knowledge base to create unique solutions for clients looking for something different for their event, we presence the highest possible standard for both the venue and the end client.

All stages and ancillary structures come with engineering drawings, structural calculations and remote weather monitoring systems for added piece of mind.

Get in touch to see how we can assist in the activation of your event or bring your concept to life.

CHS & CHE inventory of Layher Event & Creative Look System scaffold together with Prolyte staging products to consistently deliver premium solutions to world-class events. We specialize in the supply and installation to provide solutions at the events market with a huge range of industry-leading staging structures that satisfy all the requirements of today's productions, whether you need from a single set of stairs to a premium VIP installation or a special customized solution for all kind of events.

Outdoor and indoor staging solutions, conferences, product launches, major concerts, exhibitions, pavilions, museums, Hospitality and special events, awards ceremonies and large public festivals to VIP, disabled seating platforms, camera risers and delay towers. temporary grandstands.

Our Logistic effectiveness combined with efficiency in the construction of our proprietary staging system. This can reduce the number of build / derig days for an event introducing substantial time and economic savings.

All Structures available as a service hire package, complete with transportation and directly employed CISRS, IPAF, ... accredited crew.

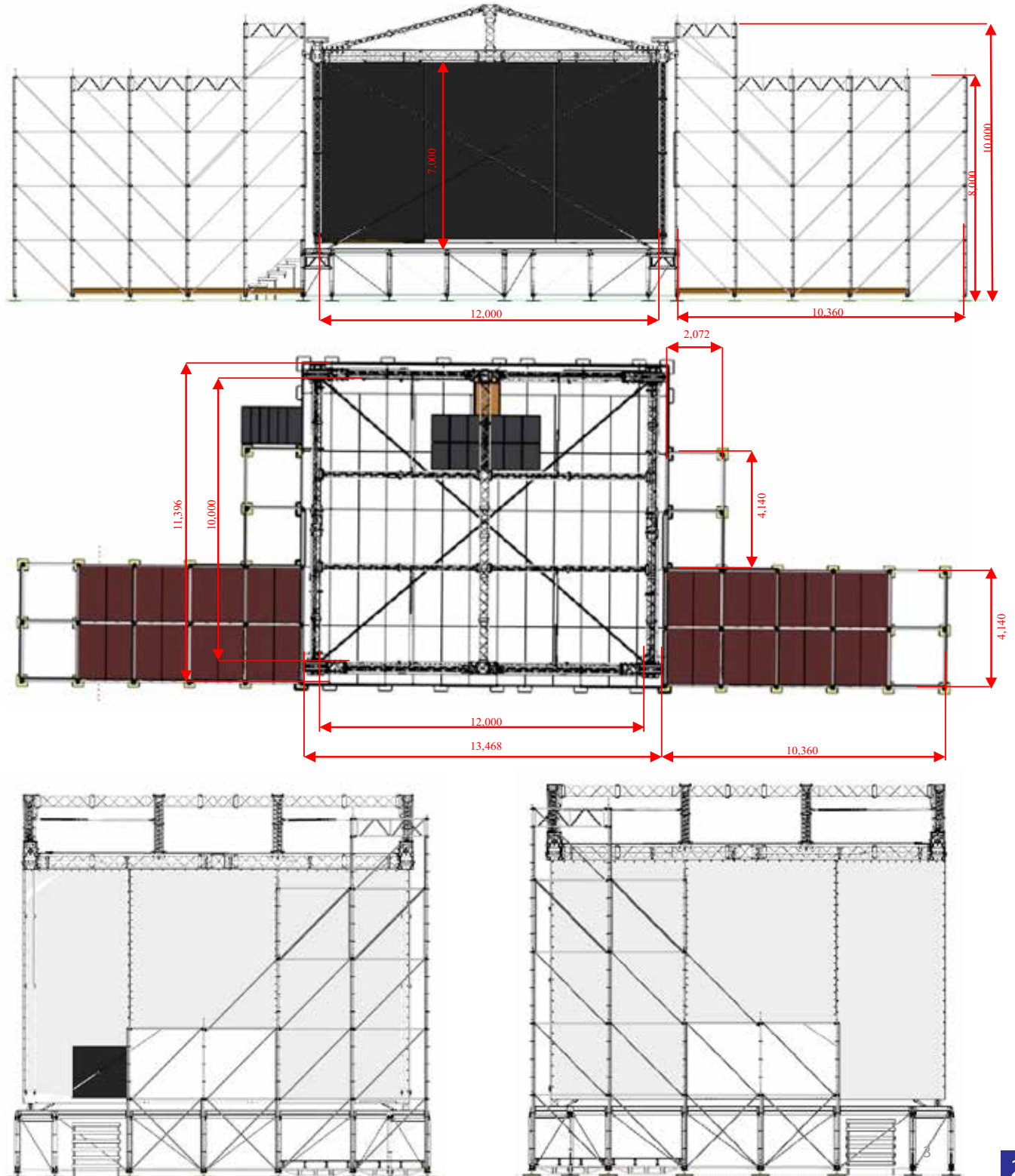




## **Prolyte MTP Stage 12m x14m**

### **System description**

The MPT Roof is a tower-based structure with a pitched roof, a design which guarantees optimum strength. Primarily configured from standard trusses, the MPT Roof is available in three different sizes. However, the unrivalled flexibility of the system affords nearly 40 calculated building varieties or setup possibilities for your MPT Roof. At Prolyte-Structures Roof Systems, we are aware that every season and every event brings different demands, and accordingly we have designed the MPT Roof to accommodate an extraordinary range of applications.



### *Prolyte MTP Stage 12m x14m*



#### Key Features:

- 12m Stage performance width
- 10m Stage performance depth
- Layher stage platform incorporating ballast and roof towers
- Integral Layher load-in ramp and access stairs
- Integral PA points
- Load capacity – 4,800kg UDL
- Build time – 1day
- Remote weather monitoring station
- Max. wind speed 28,4 m/s, 63,3 mph



**Additional – available Extras:**

This structure has many optional extras primarily configured from standard trusses. PA wings, PA Towers, Pa Goalpost, Monitor (Cow) Sheds, backstage area, FOH positions, loading docks and ramps, site Structures.

**Plant & Site Requirements:**

Forklift,

**TEMPORARY EVENT SPACES:**

CHE provide temporary spaces for events and businesses, if you're in need of extra space for your event or business, we can help you in discovering all possibilities and we are here to find a solution for your unique requirements. We can help you in designing, building and decorating your temporary space, so your event or business can be a success.

Your space problem needs a suitable solution, and the selection of a structure is an integral part of the solution. Thanks to our wide selection of products, we will always have a temporary structure to suit your needs. Most structures can be connected with other structures and existing buildings, and all structures can be adapted to your specific needs. Together we can choose a structure that best suits your requirements and we can deliver it turn-key to you.

All temporary spaces and ancillary structures come with engineering drawings, structural calculations and remote weather monitoring systems for added piece of mind.

Please use the menu to have a look at each of the staging structures that we can provide, the key features of these and case studies highlighting various work that we have undertaken.

I want to introduces myself for my company CHE - Creative House Events, I have worked the last 25 years international together and for various companies include Live Nation, FKB Scorpio, Unlimited Production B.V., Creamfields UK,...Stage Co group, Acorn Event UK, AB Bright Group Nordic, Scandinavia Rigging AB,... at event business at Consultant, Project Manager and Head of Events, from Mega events up to high class Luxury VIP & Privat events.

Please see picture below from my project reference in international event fields.

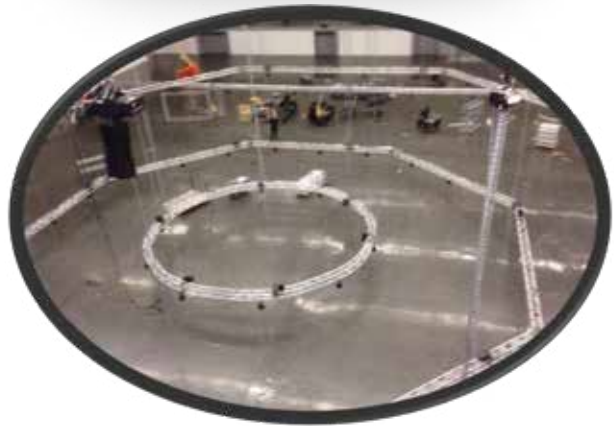
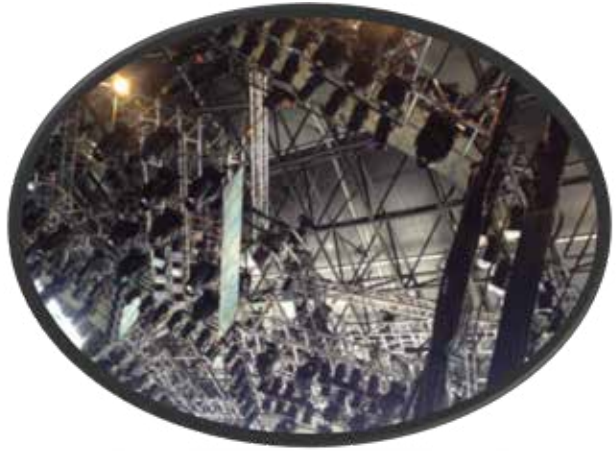
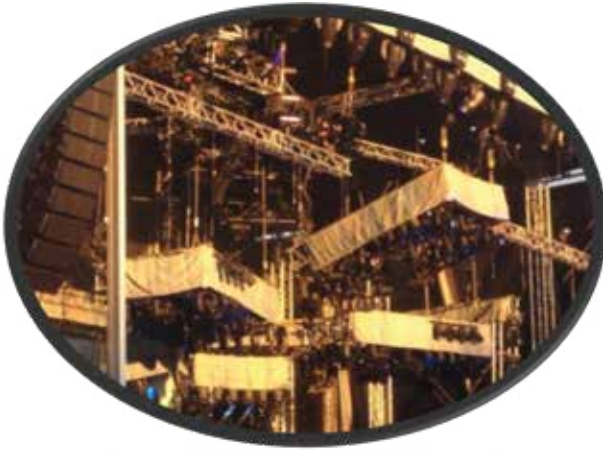








## Rigging & Flying Trusses





# CHE *Ringlock Scaffolding*

CHE company we pride ourselves on our can-do attitude which is why we've had the pleasure of working on some of the most complex and individual event projects.

From interactive art installations to construction and building of spectacular festival decor constructions with fitted production systems, we always work closely with our clients from concept to completion; ensuring that their vision becomes a reality.

Our team believe that no project is too difficult to take on which has given us the opportunity to work on some of the most interesting projects the events industry has seen. To see how we can help you with your amazing idea, contact us today.

## **Key Features:**

- Range of grid sizes and configurable to suit any height discrepancy, ground type and load bearing capacity
- Range of platform coverings to suit application
- Choice of handrails to suit all applications from basic back of house edge protection to premium glass
- balustrade
- Fully compliant with all relevant public access regulations
- Choice of cladding and branding options

## **Applications:**

Fashion Show Catwalks, Racing and jumping Ramps, ART & Sculptures, Entrance gate, Accessible viewing platforms, ...



## **Prolyte Stage deck and Flooring**

Prolyte StageDex can be qualified as the best and most versatile staging system available for indoor and outdoor.

The StageDex TopLine deck is a high quality, lightweight deck, offering a birch plywood surface, with water resistant and anti-skidding qualities.

The TopLine deck has a reinforced corner, offering a standard spigot entry on the topside of the deck. All decks have a loading capacity of 750kg/m<sup>2</sup> and are available in metric and imperial sizes and different shapes.

The universal leg fitting fixes with one simple handle ore in combination with Layher Event scaffolding.

### **Applications:**

- Internal stage platforms
- Follows pot & camera platforms
- Commentary positions
- Accessible viewing platforms
- Access stairs & ramps



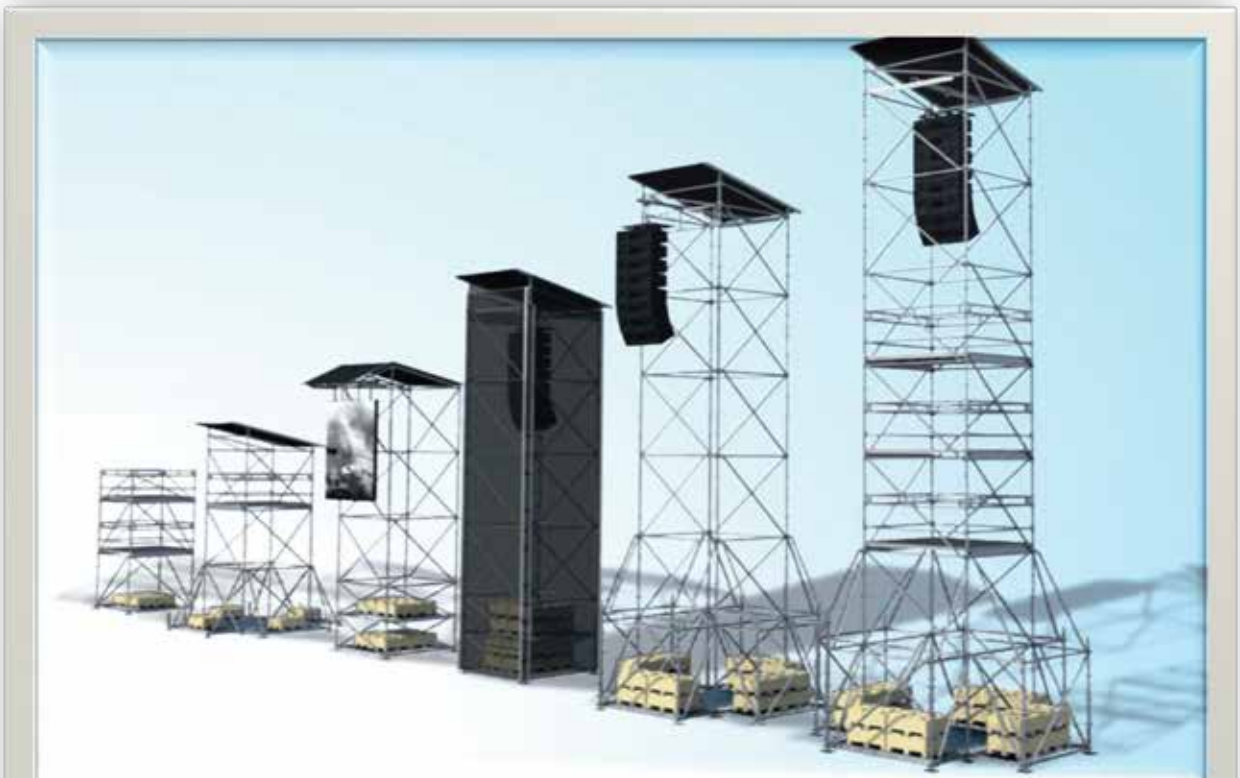


## FOH

We can provide multi-level control positions for outdoor and indoor staging. The structures can be included in a stage package or booked for use by others.



*Delay, L&S, Follow Spot Towers*



## **GROUND SUPPORT**

CHE we can safely and cost effectively deliver a range of ground support and Sport Events Grid structures to suit any brief and for use in any venue or tented structure.

Our Prolyte MTP ground support structures are configured with the towers integrated into Layher event and Creative Look system scaffold stage platforms, which assists with load distribution and has the added structural benefit of tying the ground support and platform together.

Get in touch with a member of our team to discuss your ideas and receive some specification sheets and drawings or even some advice on the best solution for your event.

### **Key Features:**

- Numerous stage widths, trim heights & load bearing capacities
- Integral PA wings
- Layher stage platform incorporating ballast and support towers
- Integral Layher load-in ramp and access stairs
- Fully engineered solutions supplied with engineering drawings & structural calculations





## **SCREEN SUPPORT**

CHS has a range of AV & LED screen supports available that cater for any size event. Based on an aluminium & steel truss frame or scaffolding. Get in touch with a member of our team to discuss your ideas and receive some specification sheets and drawings or even some advice on the best solution for your event.

### **Key Features:**

- Truss goalposts or Layher- Scaff options
- Configurable to suit any screen size and weight
- Integral ballast
- Customisation & branding options available
- Fully engineered solutions supplied with engineering drawings & structural calculations





## **Event Fence and stage Barriers**

**Temporary Event area Fence & Gate:** 2 m tall x 3.5 m wide



**Crowd Control Barriers:** 2 m wide



**Stage security Barriers:**

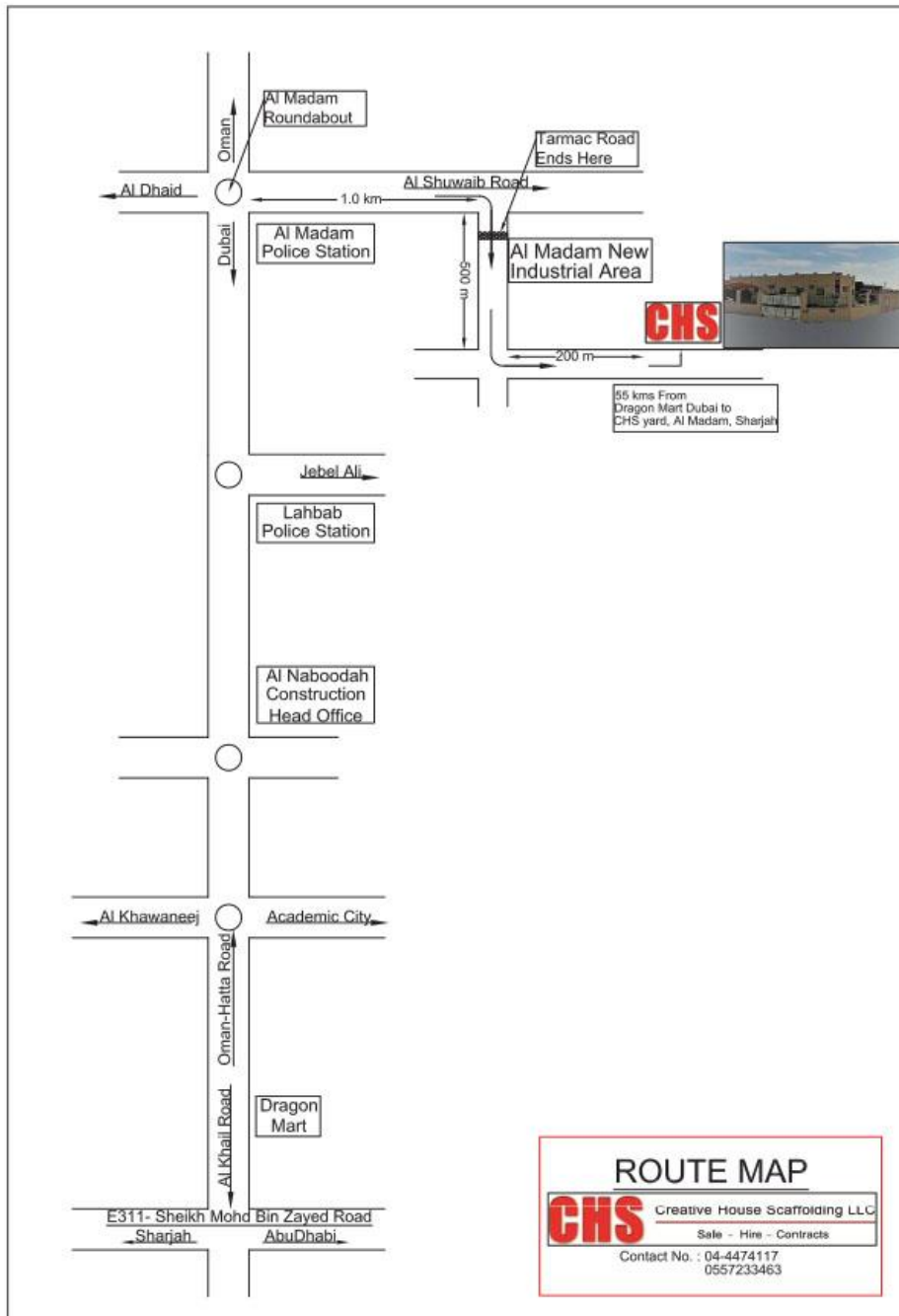


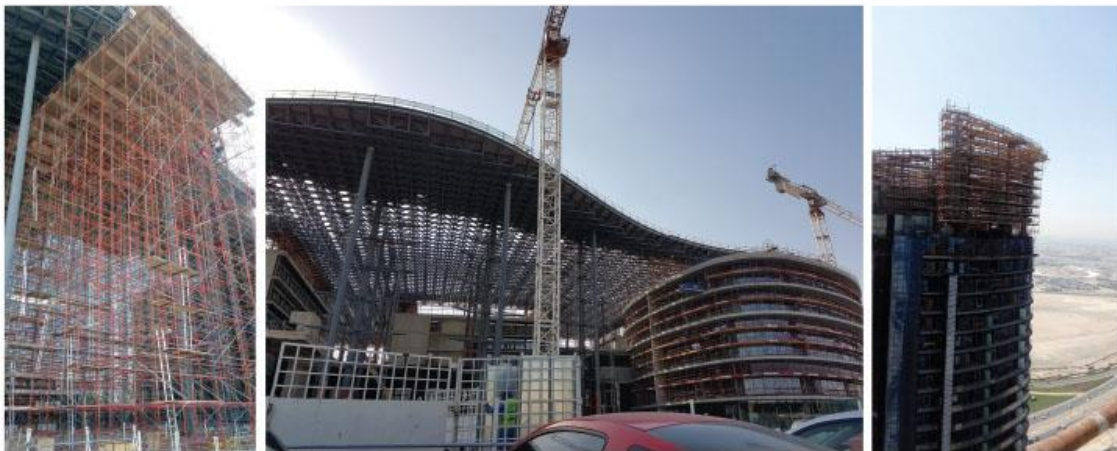
## Office Location Map



Tel : +971 4 44 74117  
Fax : +971 4 44 74116  
P.O. Box : 115713  
Office#. 3502 – Control Tower,  
Motorcity, Dubai - UAE  
[www.chsdx.com](http://www.chsdx.com)

## Yard Location





Tel : +971 4 44 74117, Fax : +971 4 44 74116, P.O. Box : 115713  
Office#. 3502 – Control Tower, Motorcity, Dubai - UAE  
[www.chsdx.com](http://www.chsdx.com)

بيت الابتكار للسقالات (ش.ذ.م.م.)

**CHS**

**CREATIVE HOUSE SCAFFOLDING**  
(LLC)

Sale

Hire

Contract